



Global sourcing platform for oilfield products

Quick Oilfield Supply Co.,Ltd supply one-stop global sourcing platform for oilfield products which is an extensive line of drilling products and production products. As a worldwide supplier of quality oilfield products to the oil and gas industry, we know the various needs of the oilfield service companies and operators worldwide. One important thing about us is we are able to supply quality products to customers with competitive price in short time. You can check some items price on our website after you login in. Customers who purchase equipment from us can benefit from great saving and get their products in time.

Production products

Wellhead&Christmas tree components(API 6A)

FC type gate valve

FC type gate valve has a non-rising stem with a slab gate, floating seat ring body bushing design to provide safe dependable services. It is available in bore sizes from 1-13/16" through 7-1/16" in working pressures from 2,000 psi to 20,000 psi and product standard level from PSL1-PSL3G. Ball Screw Operator is available for large bore and high pressure gate valves. All of our valves can be actuated by hydraulic or pneumatic actuators.



FC gate valve availability

Working pressure(psi)	Normal size(inch)							
	1 13/16	2 1/16	2 9/16	3 1/16	3 1/8	4 1/16	5 1/8	7 1/16
2000								
3000								
5000								
10000								
15000								
20000								

M Expanding Gate Valve

M type expanding gate valve has a non-rising stem with a expanding gate design to provide safe dependable services in a variety of environments. It is available in flanged ends or threaded ends in bore sizes from 2-1/16" through 4-1/16" in working pressures from 2,000 psi to 5,000 psi.

Expanding Gate valve availability

Working pressure(psi)	Normal size(inch)			
	2 1/16	2 9/16	3 1/8	4 1/16
2000				
3000				
5000				



Frac Gate valve

Our frac valves, engineered for reliability, low torque, ease of operation and service and available in manual with ball-screw operators (BSO) and hydraulic with double acting hydraulic actuators, were designed for use in high-pressure, large bore applications. The ball screw operators substantially reduce the operating torque, even in the presence of high-differential pressure.

Frac Gate valve availability

Working pressure(psi)	Normal size(inch)		
	4 1/16	5 1/8	7 1/16
5000			
10000			
15000			
20000			

- Style - FC and FLS
- Manual, ball screw operated, and hydraulic
- Temperature rate –PU, L-U
- Material class - DD, EE, and FF
- Design meets API-6A and PSL3.
- All materials meet and exceed specified criteria including NACE MR-0175 criteria
- Metal-to-metal sealing at the gate-to-seat
- Full-bore, through-conduit and bi-directional design

Gate Valve Replacement Parts

Gates, seats, body bushing, bonnet seal rings, stems, stem packings, seat seals, body bushing seals, retainer plates, guides, grease fittings, thrust bearings, etc.



Choke valve

Adjustable and positive choke valve

- Nominal Sizes: 2", 3", 4"
- Needle/Maximum Orifice Size: 1", 2", 3"
- Working Pressure: 2000 through 15,000 psi
- Operating Temperatures: API ratings P, R, S, T, U.



Adjustable choke valve



Positive choke valve

Casing head C22/C29

C-22 Casing Heads use a straight-bore bowl design that prevents damage to sealing areas from drilling tools and prevents test-plug and bowl-protector wedging problems under pressure. This straight bore design also reduces maintenance costs and permits suspension of heavy casing loads. C-22 Casing Heads normally are furnished with 2-inch threaded outlets, but optional sizes and studded outlets are available upon request. Bottom connections can be furnished slip-on-weld, threaded or slip-n-lock. C-22 Casing Heads permit interchangeability of casing hangers C-22 and C-21.

The C-29 Casing Head uses a straight bore based on the same reliable design as the C-22, except the bowl is 2 inches deeper, permitting the acceptance of the minimal-deflection C-29 Casing Hanger. This allows extreme-load casing-hanging capacity compared with the C-22 profile.





C22 Casing Head Specification

Top Flange Size (inches)	Working Pressure (psi)	Casing Size (inches)	Outlet
9"	2,000	7"	2" LP
9"	3,000	7"	2" LP
9"	2,000	7-5/8"	2" LP
9"	3,000	7-5/8"	2" LP
9"	5,000	7-5/8"	2" LP
9"	2,000	8-5/8"	2" LP
9"	3,000	8-5/8"	2" LP
9"	5,000	8-5/8"	2" LP
11"	2,000	8-5/8"	2" LP
11"	3,000	8-5/8"	2" LP
11"	5,000	8-5/8"	2" LP
11"	2,000	9-5/8"	2" LP
11"	3,000	9-5/8"	2" LP
11"	5,000	9-5/8"	2" LP
11"	2,000	10-3/4"	2" LP
11"	3,000	10-3/4"	2" LP
11"	5,000	10-3/4"	2" LP
13-5/8"	2,000	11-3/4"	2" LP
13-5/8"	3,000	11-3/4"	2" LP
13-5/8"	2,000	13-3/8"	2" LP
13-5/8"	3,000	13-3/8"	2" LP
13-5/8"	5,000	13-3/8"	2" LP
16-3/4"	2,000	16"	2" LP
16-3/4"	3,000	16"	2" LP
21-1/4"	2,000	20"	2" LP
20-3/4"	3,000	20"	2" LP

C29 Casing Head Specification

Top Flange Size (inches)	Working Pressure (psi)	Casing Size (inches)	Outlet
11"	3,000	8-5/8"	LP/SSO
11"	5,000	8-5/8"	LP/SSO
11"	3,000	9-5/8"	LP/SSO
11"	5,000	9-5/8"	LP/SSO
11"	3,000	10-3/4"	LP/SSO
11"	5,000	10-3/4"	LP/SSO
13-5/8"	3,000	13-3/8"	LP/SSO
13-5/8"	5,000	13-3/8"	LP/SSO
16-3/4"	2,000	16"	LP/SSO
16-3/4"	3,000	16"	LP/SSO
16-3/4"	5000	16"	LP/SSO
21-1/4"	2,000	20"	LP/SSO
20-3/4"	3,000	20"	LP/SSO

Casing Spool C22/C29



C22 Casing Spool Specification

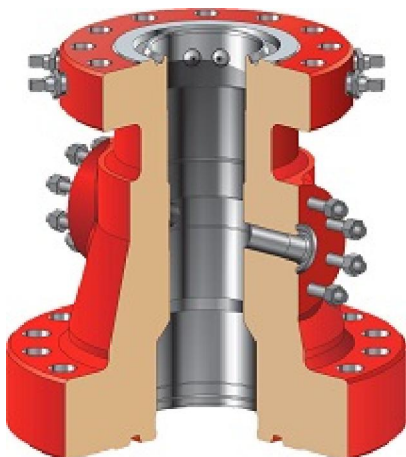
Top Flange Size (inches)	Working Pressure (psi)	Bottom Flange Size (inches)	Working Pressure (psi)
11"	2000	11"	2000
11"	2000	13-5/8"	3000
11"	3000	11"	3000
11"	3000	11"	2000
11"	3000	13-5/8"	2000
11"	3000	13-5/8"	3000
11"	3000	16-3/4"	2000
11"	3000	16-3/4"	3000
11"	5000	13-5/8"	3000
11"	5000	16-3/4"	3000
11"	10000	13-5/8"	5000
13-5/8"	3000	16-3/4"	3000
13-5/8"	3000	21-1/4"	2000
13-5/8"	5000	20-3/4"	3000

C29 Casing Spool Specification

Top Flange Size (inches)	Working Pressure (psi)	Bottom Flange Size (inches)	Working Pressure (psi)
11"	3000	11"	3,000
11"	3000	13-5/8"	3,000
11"	3000	16-3/4"	3,000
11"	5000	11"	3,000
11"	5000	13-5/8"	3,000
11"	5000	13-5/8"	5,000
11"	5000	16-3/4"	3000
11"	5000	16-3/4"	5,000
11"	10000	11"	10,000
11"	10000	13-5/8"	5,000
13-5/8"	3000	20-3/4"	3,000
13-5/8"	5000	20-3/4"	3,000

Tubing Head&Spool

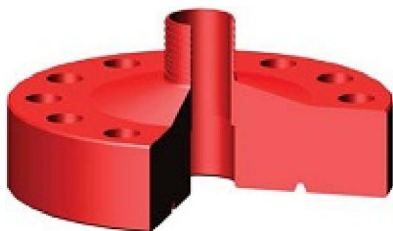
Tubing Heads & Spool use a straight-bore bowl design for single and multiple completions in working pressures through 15,000 psi and in sizes to meet all multiple-completion requirements Bottom preparation can include PE seal or X-bushing secondary seals. HPE seals for high-performance frac wells are available upon request.



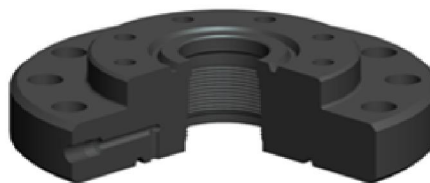
Tubing Head Specification (API 6A)

Top Flange Size (inches)	Working Pressure (psi)	Bottom Flange Size (inches)	Working Pressure (psi)
7-1/16"	3000	11"	2,000
7-1/16"	3000	11"	3,000
7-1/16"	3000	13-5/8"	2,000
7-1/16"	3000	13-5/8"	3,000
7-1/16"	5000	11"	3,000
7-1/16"	5000	11"	5000
7-1/16"	5000	13-5/8"	3,000
7-1/16"	10000	11"	5,000
7-1/16"	10000	11"	10,000
7-1/16"	15000	11"	10,000
9"	3000	11"	3,000
9"	3000	13-5/8"	2000
9"	3000	13-5/8"	3,000
9"	5000	11"	3,000
9"	5000	13-5/8"	3,000
9"	10000	11"	5,000
9"	10000	11"	10,000
11"	10000	13-5/8"	5000

Tubing head Adapter



B1 Tubing head Adapter



B2P Tubing head Adapter

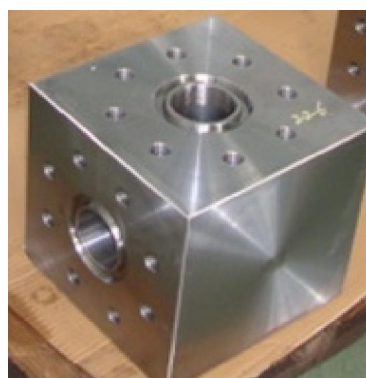
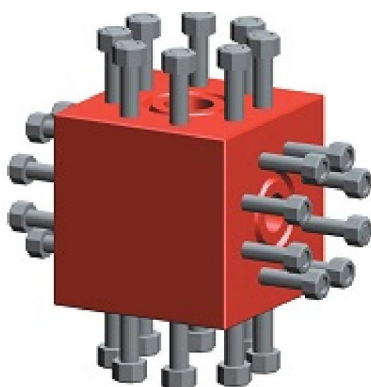
B1 Tubing head Adapter Specification

Flange Size (inches)	Working Pressure (psi)	Threaded Top	Bottom Thread
7 1/16"	2000	2-3/8" UP TBG	2-3/8" UP TBG
7 1/16"	2000	2-7/8" UP TBG	2-7/8" UP TBG
7 1/16"	2000	3-1/2" UP TBG	3-1/2" UP TBG
7 1/16"	3000	2-3/8" UP TBG	2-3/8" UP TBG
7 1/16"	3000	2-7/8" UP TBG	2-7/8" UP TBG
7 1/16"	3000	3-1/2" UP TBG	3-1/2" UP TBG
7 1/16"	5000	2-3/8" UP TBG	2-3/8" UP TBG
7 1/16"	5000	2-7/8" UP TBG	2-7/8" UP TBG
7 1/16"	5000	3-1/2" UP TBG	3-1/2" UP TBG

B2P Tubing head Adapter Specification

Flange Size (inches)	Working Pressure (psi)	Studded Top	Bottom Thread
7 1/16"	2000	2-1/16" 2,000 psi	2-3/8" UP TBG
7 1/16"	3000	2-1/16" 5,000 psi	2-3/8" UP TBG
7 1/16"	3000	2-9/16" 5,000 psi	2-7/8" UP TBG
7 1/16"	3000	3-1/8" 5,000 psi	3-1/2" UP TBG
7 1/16"	5000	2-1/16" 5,000 psi	2-3/8" UP TBG
7 1/16"	5000	2-9/16" 5,000 psi	2-7/8" UP TBG
7 1/16"	5000	3-1/8" 5,000 psi	3-1/2" UP TBG

Crosses & Tee





Technical Specification

Run Size (inches)	Working Pressure (psi)	Outlet Size (inches)	Working Pressure (psi)
2-1/16"	2,000	2-1/16"	2000
2-1/16"	5,000	2-1/16"	2000
2-9/16"	2,000	2-1/16"	2000
2-9/16"	5,000	2-1/16"	2000
3-1/8"	2,000	2-1/16"	2000
3-1/8"	3,000	2-1/16"	5000
3-1/8"	3,000	3-1/8"	3000
3-1/8"	5,000	2-1/16"	5000
3-1/8"	5,000	3-1/8"	5000
4-1/16"	2000	2-1/16"	2000
4-1/16"	2,000	4-1/16"	2000
4-1/16"	3,000	2-1/16"	5000
4-1/16"	3,000	4-1/16"	3000
4-1/16"	5,000	2-1/16"	5000
4-1/16"	5,000	2-9/16"	5000
4-1/16"	5,000	3-1/8"	5000
4-1/16"	5,000	4-1/16"	5000
1-13/16"	10,000	1-13/16"	10000
1-13/16"	15,000	1-13/16"	15000
2-1/16"	10000	1-13/16"	10000
2-1/16"	10,000	2-1/16"	10000
2-1/16"	15,000	1-13/16"	15000
2-1/16"	15,000	2-1/16"	15000
2-9/16"	10,000	1-13/16"	10000
2-9/16"	10,000	2-1/16"	10000
2-9/16"	10,000	2-9/16"	10000
2-9/16"	15,000	1-13/16"	15000
2-9/16"	15,000	2-1/16"	15000
2-9/16"	15,000	2-9/16"	15000
3-1/16"	10000	2-1/16"	10000
3-1/16"	10,000	2-9/16"	10000
3-1/16"	10,000	3-1/16"	10000
4-1/16"	10,000	2-1/16"	10000
4-1/16"	10,000	3-1/16"	10000
4-1/16"	10,000	4-1/16"	10000

Flange



Flange Specification

Flange Size	Working Pressure (psi)	Outside Diameter	Number of Bolt Holes	Diameter of Bolts	Length of Bolts	API Ring Gasket
1-13/16"	10,000	7-3/8"	8	3/4"	5-1/4"	BX-151
	15,000	8-3/16"	8	7/8"	6"	BX-151
	20,000	10-1/8"	8	1"	7-3/4"	BX-151
2-1/16"	2,000	6-1/2"	8	5/8"	5/8"	R-23
	3,000/5,000	8-1/2"	8	7/8"	7/8"	R-24
	10,000	7-7/8"	8	3/4"	3/4"	BX-152
	15,000	8-3/4"	8	7/8"	7/8"	BX-152
	20,000	11-5/16"	8	1-1/8"	1-1/8"	BX-152
2-9/16"	2,000	7-1/2"	8	3/4"	5-1/4"	R-26
	3,000/5,000	9-5/8"	8	1"	7"	R-27
	10,000	9-1/8"	8	7/8"	6-1/4"	BX-153
	15,000	10"	8	1"	7"	BX-153
	20,000	12-13/16"	8	1-1/4"	9-1/2"	BX-153
3-1/8"	2,000	8-1/4"	8	3/4"	5-1/2"	R-31
	3,000	9-1/2"	8	7/8"	6-1/4"	R-31
	5000	10-1/2"	8	1-1/8"	7-3/4"	R-35
3-1/16"	10,000	10-5/8"	8	1"	7-1/4"	BX-154
	15,000	11-5/16"	8	1-1/8"	8"	BX-154
	20,000	14-1/16"	8	1-3/8"	10-3/4"	BX-154
4-1/16"	2,000	10-3/4"	8	7/8"	6-1/4"	R-37
	3,000	11-1/2"	8	1-1/8"	7-1/2"	R-37
	5,000	12-1/4"	8	1-1/4"	8-1/2"	R-39
	10,000	12-7/16"	8	1-1/8"	8-3/8"	BX-155
	15,000	14-3/16"	8	1-3/8"	9-3/4"	BX-155
	20,000	17-9/16"	8	1-3/4"	12-3/4"	BX-155
5-1/8"	5,000	14-3/4"	8	1-1/2"	10-3/4"	R-44



Quick Oilfield Supply Co., Ltd

Flange Size	Working Pressure (psi)	Outside Diameter	Number of Bolt Holes	Diameter of Bolts	Length of Bolts	API Ring Gasket
7-1/16"	2,000	14"	12	1"	7-1/2"	R-45
	3,000	15"	12	1-1/8"	8-1/2"	R-45
	5,000	15-1/2"	12	1-3/8"	11-1/4"	R-46
	10,000	18-7/8"	12	1-1/2"	11-3/4"	BX-156
	15,000	19-7/8"	16	1-1/2"	13"	BX-156
	20000	25-13/16"	16	2"	17-3/4"	BX-156
9"	2,000	16-1/2"	12	1-1/8"	8-1/2"	R-49
	3,000	18-1/2"	12	1-3/8"	9-1/2"	R-49
	5,000	19"	12	1-5/8"	12-1/2"	R-50
	10,000	21-3/4"	16	1-1/2"	13-1/4"	BX-157
	15,000	25-1/2"	16	1-7/8"	16"	BX-157
11"	2,000	20"	16	1-1/4"	9-1/4"	R-53
	3,000	21-1/2"	16	1-3/8"	10"	R-53
	5,000	23"	12	1-7/8"	14-1/4"	R-54
	10,000	25-3/4"	16	1-3/4"	15-3/8"	BX-158
	15,000	32"	20	2"	19-1/2"	BX-158
13-5/8"	2,000	22"	20	1-1/4"	9-1/2"	R-57
	3,000	24"	20	1-3/8"	10-3/4"	R-57
	5,000	26-1/2"	16	1-5/8"	12-3/4"	BX-160
	10,000	30-1/4"	20	1-7/8"	17-3/4"	BX-159
	15,000	34-7/8"	20	2-1/4"	21"	BX-159
16-3/4"	2000	27"	20	1-1/2"	10-3/4"	R-65
	3,000	27-3/4"	20	1-5/8"	12-1/4"	R-66
	5,000	30-3/8"	16	1-7/8"	14-3/4"	BX-162
	10,000	34-5/16"	24	1-7/8"	17-3/4"	BX-162
18-3/4"	5,000	35-5/8"	20	2"	18"	BX-163
	10,000	40-15/16"	24	2-1/4"	23"	BX-164
20-3/4"	3,000	33-3/4"	20	2"	15-1/4"	R-74
21-1/4"	2,000	32"	24	1-5/8"	12-1/2"	R-73
	5,000	39"	24	2"	19"	BX-165
	10,000	45"	24	2-1/2"	24-3/4"	BX-166
26-3/4"	2,000	41"	20"	1-3/4"	14-1/4"	BX-167
	3,000	43-3/8"	24"	2"	17-1/2"	BX-168